



## INDUSTRIAL KATHARINA

# SHIP PARTICULARS

## 12K-300

Name	Built	IMO-No.	Flag	Name	Built	IMO-No.	Flag
Industrial Ursula	2008	9435117	Antigua & Barbuda	Eva	2008	9435105	Antigua & Barbuda
Industrial Katharina	2009	9435129	Antigua & Barbuda	Ella	2007	9384318	Antigua & Barbuda
Louise Auerbach	2007	9388895	Liberia				

### GENERAL INFORMATION

**Type** Box-Hold MPP Tweendecker

### TONNAGE

**DWT** 12,780 mt  
**GT** 9,620  
**NT** 4,260

### MAIN DATA

**LOA** 138.50 m  
**Beam** 21.00 m  
**Summer Draft** 8.00 m  
**Max Speed** 15.0 knots

### HOLDS/HATCHES

**Number** 3 Holds / 3 Hatches  
**Hold No.1** 18.75 x 15.01 x 10.53 m  
**Hold No.2** 42.00 x 17.50 x 11.18 m  
**Hold No.3** 25.50 x 17.50 x 10.77 m  
**Hatch No.1** 18.75 x 15.01 m  
**Hatch No.2** 42.00 x 17.50 m  
**Hatch No.3** 25.50 x 17.50 m

### CARGO CAPACITY

15,952 cbm / 563,340 cbft  
**with Tweendeck** 14,891 cbm / 525,870 cbft Bale

### FLOOR SPACE

**Under Deck** 2,919 m<sup>2</sup>  
**On Deck** 1,486 m<sup>2</sup>  
**Total** 4,405 m<sup>2</sup>

### MAX. PERMISSABLE LOAD

**Tanktop** 16.0 mt/m<sup>2</sup>  
**Tweendeck** 2.5 mt/m<sup>2</sup> Hold No.1  
 4.0 mt/m<sup>2</sup> Hold No.2, 3  
**Hatchcovers** 1.75 mt/m<sup>2</sup>

### CONTAINERS CAPACITY

**Total** 665  
**Reefer Plugs** 50

### CARGO HANDLING GEAR

**Cranes** 2 x 150 mt  
**Combined Lift Capacity** 300 mt

### SPECIAL EQUIPMENT/FEATURE

**IMO fitted** Yes  
**Lakes Fitted** Yes  
**CO2 Fitted**  
**A60 Bulk Head**  
**Grain Fitted** Yes  
**Bowthruster** 500 KW  
*ecOptimized*<sup>®</sup>

All details including speed are given in good faith and can vary on the individual vessels. They are to be considered „about“, are given without guarantee and must not be used as basis for charterparties or contracts without Intermarine's explicit written authority. For further information, please contact [info@intermarine.com](mailto:info@intermarine.com) // **Last Revised: December 2024**

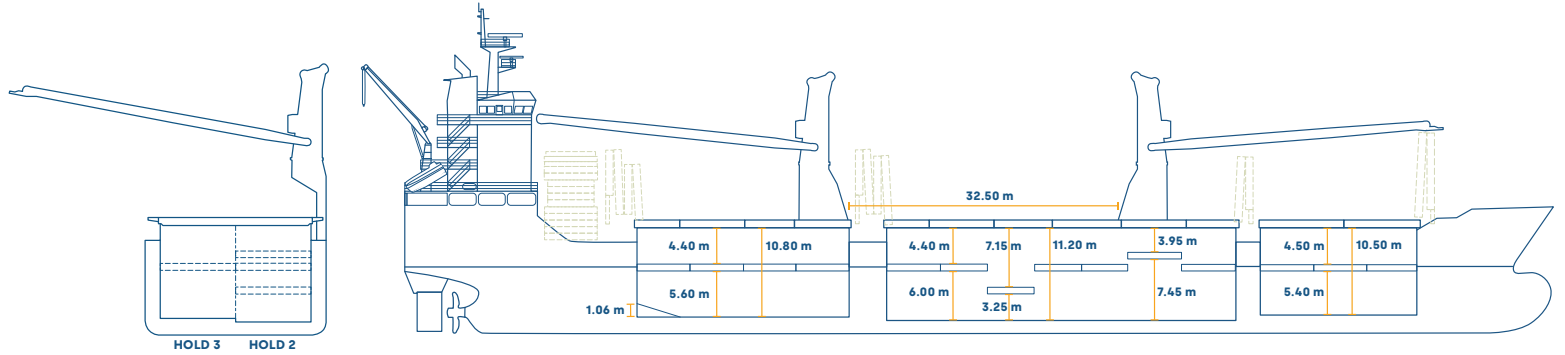
**12K-300**

**INDUSTRIAL URSULA  
INDUSTRIAL KATHARINA  
LOUISE AUERBACH**

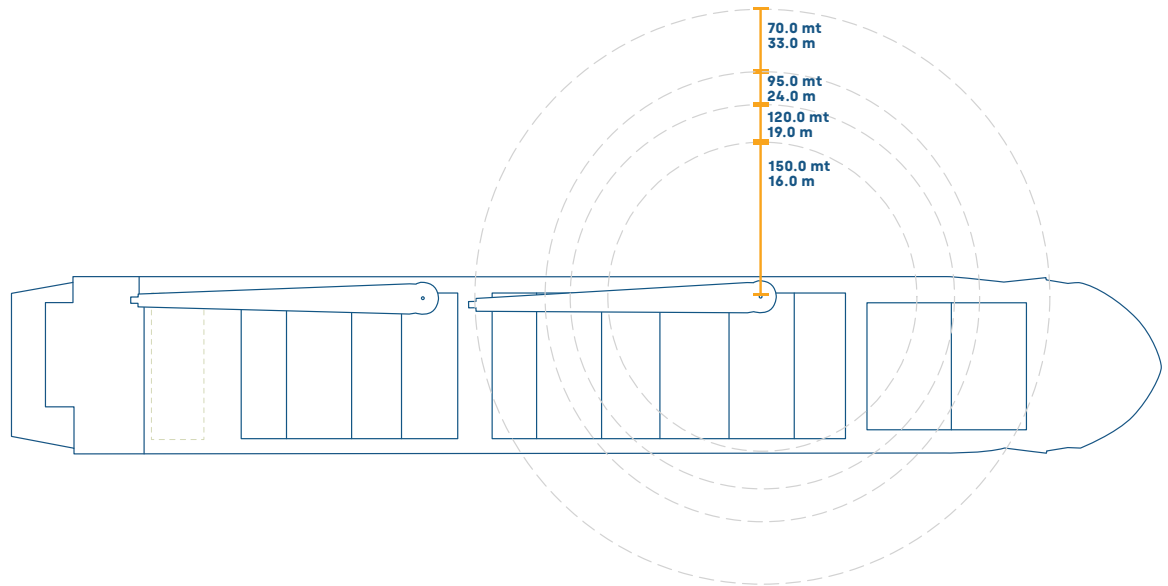
**EVA  
ELLA**

**FRONT**

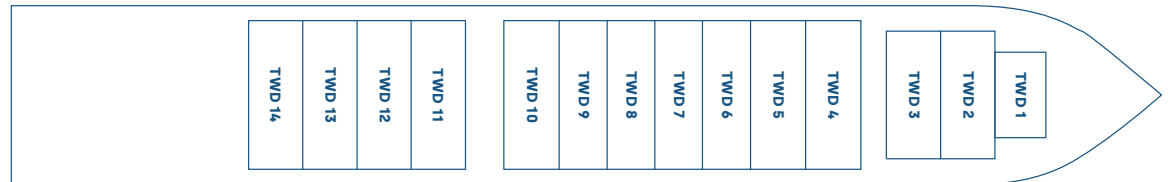
**SIDE**



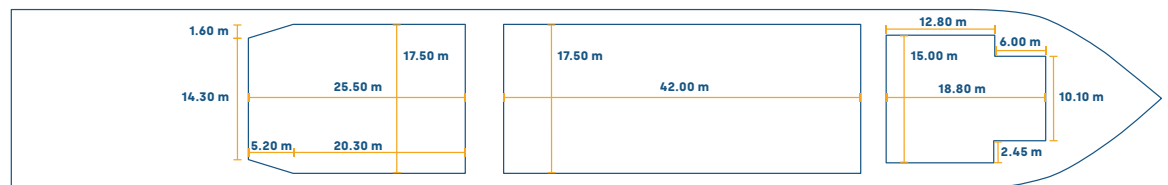
**MAINDECK**



**TWEENDECK**



**TANKTOP**



All details including speed are given in good faith and can vary on the individual vessels. They are to be considered „about“, are given without guarantee and must not be used as basis for charterparties or contracts without Intermarine’s explicit written authority. For further information, please contact [info@intermarine.com](mailto:info@intermarine.com) // **Last Revised: December 2024**