



INTERMARINE



SHIP PARTICULARS 8K-300

Name	Built	IMO-No.	Flag	Name	Built	IMO-No.	Flag
Industrial Color	2019	9810355	Portugal	Industrial Courage	2018	9810329	Portugal
Industrial Constant	2018	9810343	Portugal	Industrial Confidence	2018	9810331	Portugal

GENERAL INFORMATION

Type	Box-Hold MPP TWD
Class	Lloyd's Register

TONNAGE

DWT	8,500 mt
GT	7,498 mt
NT	2,250 mt

MAIN DATA

LOA	99.99 m
Beam	20.50 m
Summer Draft	8.40 m
Max Speed	13.5 knots

HOLDS/HATCHES

Number	1 Hold / 1 Hatch
Hold No.1	60.90 x 15.30 x 12.10 m
Hatch No.1	60.90 x 15.30 m

CARGO CAPACITY

with Tweendeck	10,228 cbm / 361,198 cbft	Bale
----------------	---------------------------	------

FLOOR SPACE

Under Deck	1,665.86 m ²
On Deck	927.59 m ²
Total	2,593.45 m ²

MAX. PERMISSABLE LOAD

Tanktop	12 mt/m ²
Tweendeck	3.5 mt/m ²
Hatchcovers	3.5 mt/m ²

CONTAINERS CAPACITY

Total	425 TEU
Reefer Plugs	50

CARGO HANDLING GEAR

Cranes	2 x 150 mt (portside)
Combined Lift Capacity	300 mt

SPECIAL EQUIPMENT/FEATURE

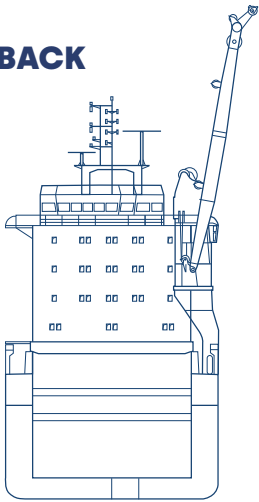
IMO fitted	Yes
Lakes Fitted	Yes
CO2 Fitted	
A60 Bulkhead	Yes
Grain Fitted	
Bowthruster	500 kW

All details including speed are given in good faith and can vary on the individual vessels. They are to be considered „about“, are given without guarantee and must not be used as basis for charterparties or contracts without Intermarine's explicit written authority. For further information, please contact info@intermarine.com // Last Revised: April 2024

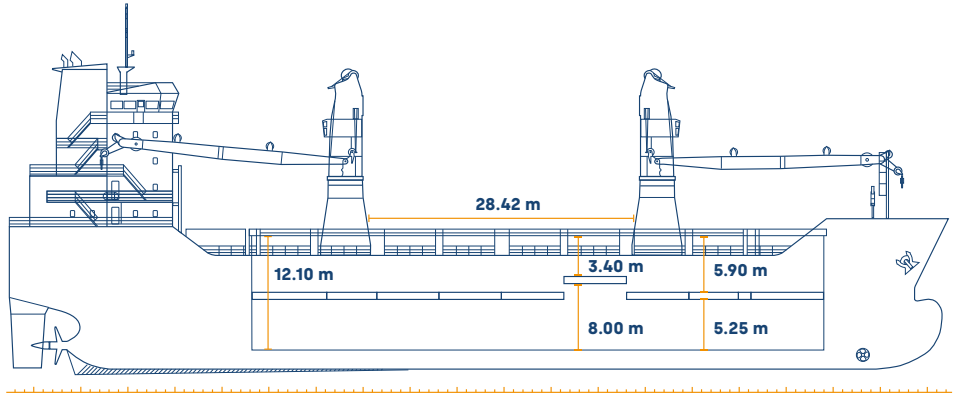
8K-300

**INDUSTRIAL COLOR
INDUSTRIAL CONSTANT
INDUSTRIAL COURAGE
INDUSTRIAL CONFIDENCE**

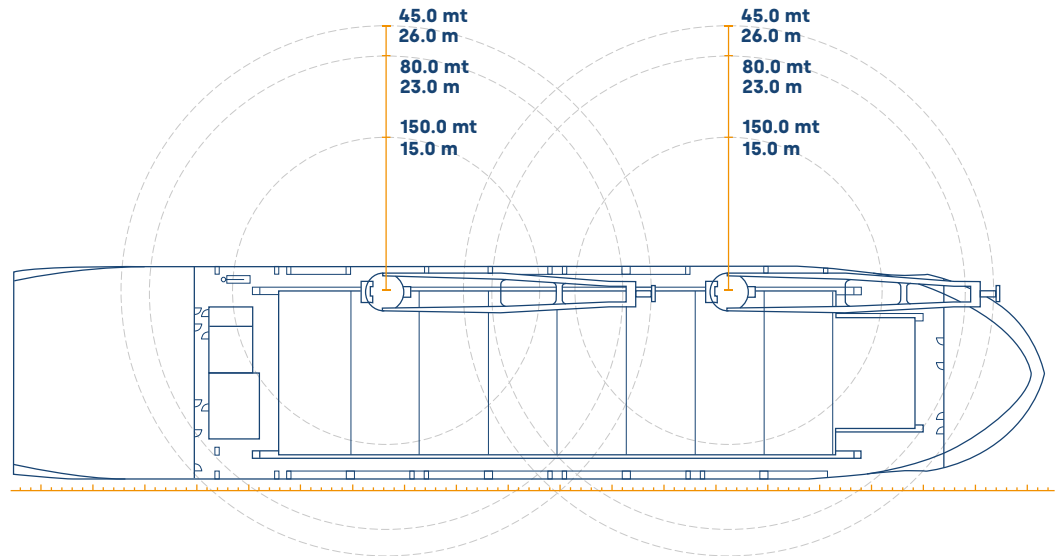
BACK



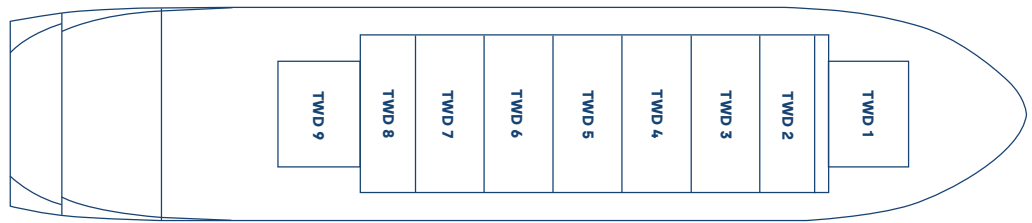
SIDE



MAINDECK



TWEENDECK



TANKTOP



All details including speed are given in good faith and can vary on the individual vessels. They are to be considered „about“, are given without guarantee and must not be used as basis for charterparties or contracts without Intermarine’s explicit written authority. For further information, please contact info@intermarine.com // **Last Revised: April 2024**