



INDUSTRIAL KATHARINA

SHIP PARTICULARS

12K-300

Name	Built	IMO-No.	Flag	Name	Built	IMO-No.	Flag
Industrial Ursula	2008	9435117	Antigua & Barbuda	Louise Auerbach	2007	9388895	Liberia
Industrial Katharina	2009	9435129	Antigua & Barbuda				

GENERAL INFORMATION

Type Box-Hold MPP Tweendecker

TONNAGE

DWT 12,780 mt
GT 9,620
NT 4,260

MAIN DATA

LOA 138.50 m
Beam 21.00 m
Summer Draft 8.00 m
Max Speed 15.0 knots

HOLDS/HATCHES

Number 3 Holds / 3 Hatches
Hold No.1 18.75 x 15.01 x 10.53 m
Hold No.2 42.00 x 17.50 x 11.18 m
Hold No.3 25.50 x 17.50 x 10.77 m
Hatch No.1 18.75 x 15.01 m
Hatch No.2 42.00 x 17.50 m
Hatch No.3 25.50 x 17.50 m

CARGO CAPACITY

15,952 cbm / 563,340 cbft ¹⁾
with Tweendeck 14,891 cbm / 525,870 cbft ²⁾ Bale

FLOOR SPACE

Under Deck 2,919 m²
On Deck 1,486 m²
Total 4,405 m²

MAX. PERMISSIBLE LOAD

Tanktop 16.0 mt/m²
Tweendeck 2.5 mt/m² Hold No.1
 4.0 mt/m² Hold No.2, 3
Hatchcovers 1.75 mt/m²

CONTAINERS CAPACITY

Total 665
Reefer Plugs 50

CARGO HANDLING GEAR

Cranes 2 x 150 mt
Combined Lift Capacity 300 mt

SPECIAL EQUIPMENT/FEATURE

IMO fitted Yes
Lakes Fitted Yes
CO2 Fitted
A60 Bulk Head
Grain Fitted Yes
Bowthruster 500 KW
ecOptimized ¹⁾

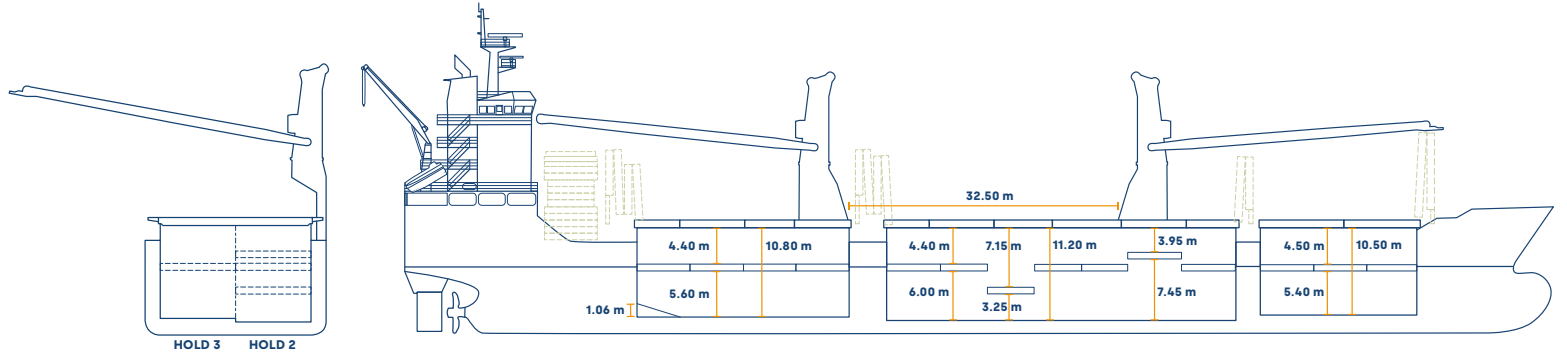
All details including speed are given in good faith and can vary on the individual vessels. They are to be considered „about“, are given without guarantee and must not be used as basis for charterparties or contracts without Intermarine's explicit written authority. For further information, please contact info@intermarine.com // **Last Revised: June 2024**

12K-300

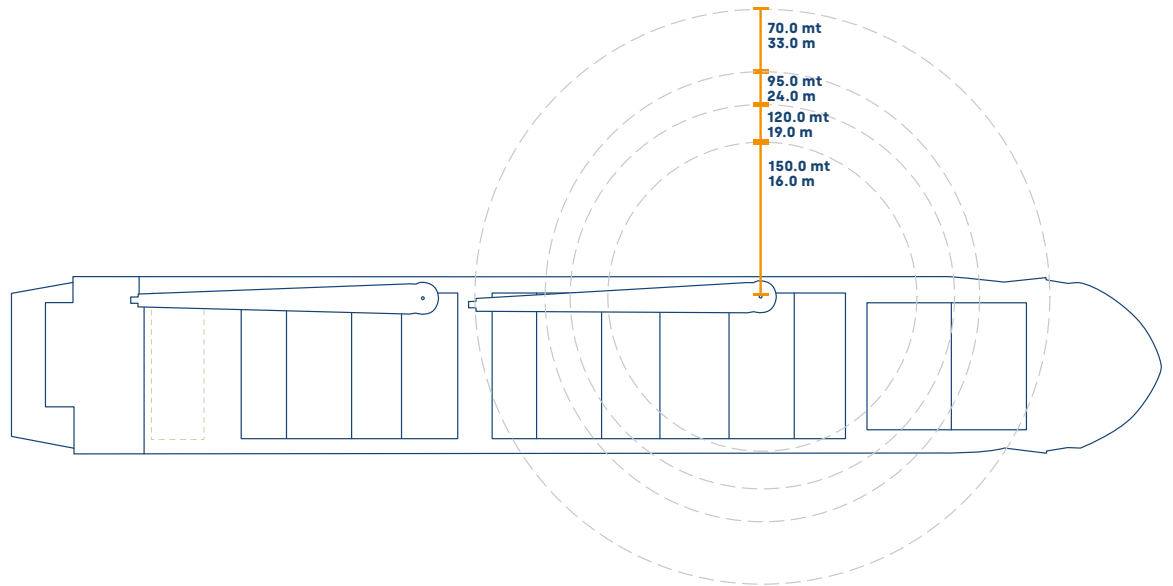
**INDUSTRIAL URSULA
INDUSTRIAL KATHARINA
LOUISE AUERBACH**

FRONT

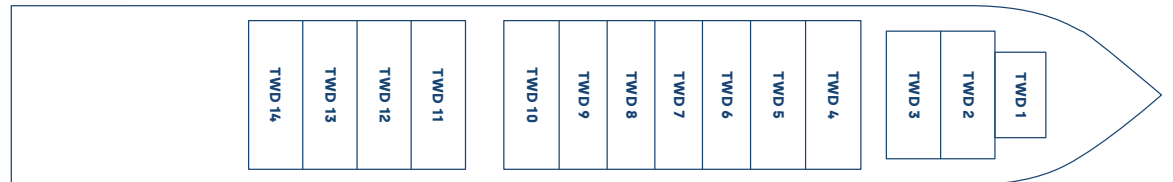
SIDE



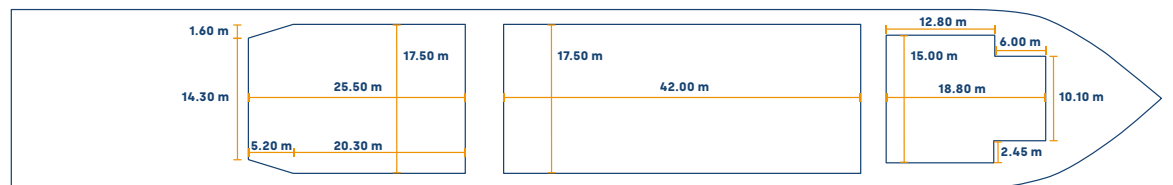
MAINDECK



TWEENDECK



TANKTOP



All details including speed are given in good faith and can vary on the individual vessels. They are to be considered „about“, are given without guarantee and must not be used as basis for charterparties or contracts without Intermarine’s explicit written authority. For further information, please contact info@intermarine.com // **Last Revised: June 2024**