

# SHIP PARTICULARS

## 12K-360

Name	Built	IMO-No.	Flag
RMS Fraternity	2008	9402055	Antigua & Barbuda

### GENERAL INFORMATION

Type	Box-Hold MPP Tweendecker
Class	Korean Register

### TONNAGE

DWT	12,672 mt
GT	9,611
NT	4,260

### MAIN DATA

LOA	138.07 m
Beam	21.00 m
Summer Draft	8.00 m
Max Speed	14.0 knots

### HOLDS/HATCHES

Number	3 Holds / 3 Hatches
Hold No.1	18.75 x 15.02/10.06 m
Hold No.2	42.33 m x 17.50 m
Hold No.3	26.00 m x 17.50 m
Hatch No.1	18.75 x 15.02/10.06 m
Hatch No.2	42.00 m x 17.50 m
Hatch No.3	25.50 m x 17.50 m

### CARGO CAPACITY

with Tweendeck	15,953 cbm / 563,374 cbft Grain/Bale
----------------	--------------------------------------

### FLOOR SPACE

Under Deck	2,810 m <sup>2</sup>
On Deck	1,480 m <sup>2</sup>
Total	4,290 m <sup>2</sup>

### MAX. PERMISSABLE LOAD

Tanktop	16.00 mt/m <sup>2</sup>
Tweendeck	4.00 mt/m <sup>2</sup>
Hatchcovers	1.75 mt/m <sup>2</sup>

### CONTAINERS CAPACITY

Total	661
Reefer Plugs	25

### CARGO HANDLING GEAR

Cranes	2 x 180 mt
Combined Lift Capacity	360 mt

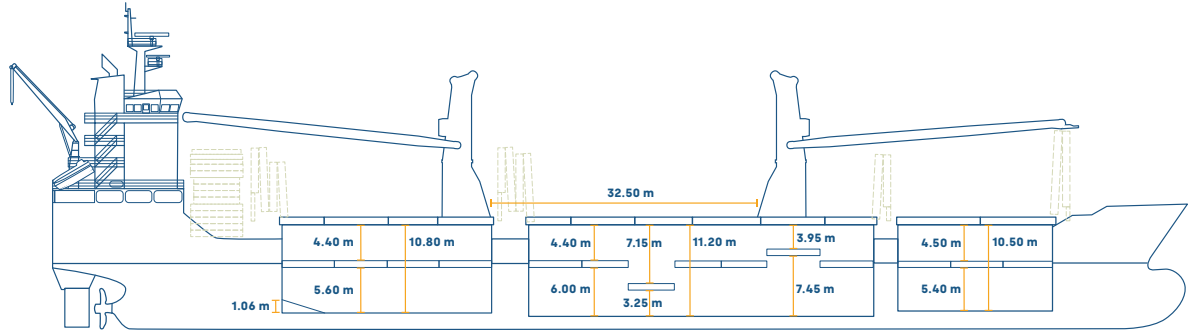
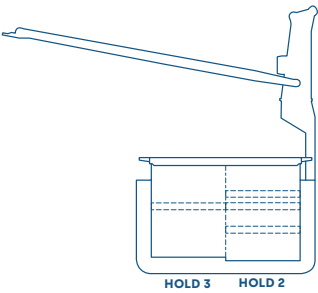
### SPECIAL EQUIPMENT/FEATURE

Ice Class	1A
IMO fitted	Yes
Lakes Fitted	Yes
CO2 Fitted	Yes
A60 Bulk Head	Yes
Grain Fitted	Yes
Bowthruster	500 kW

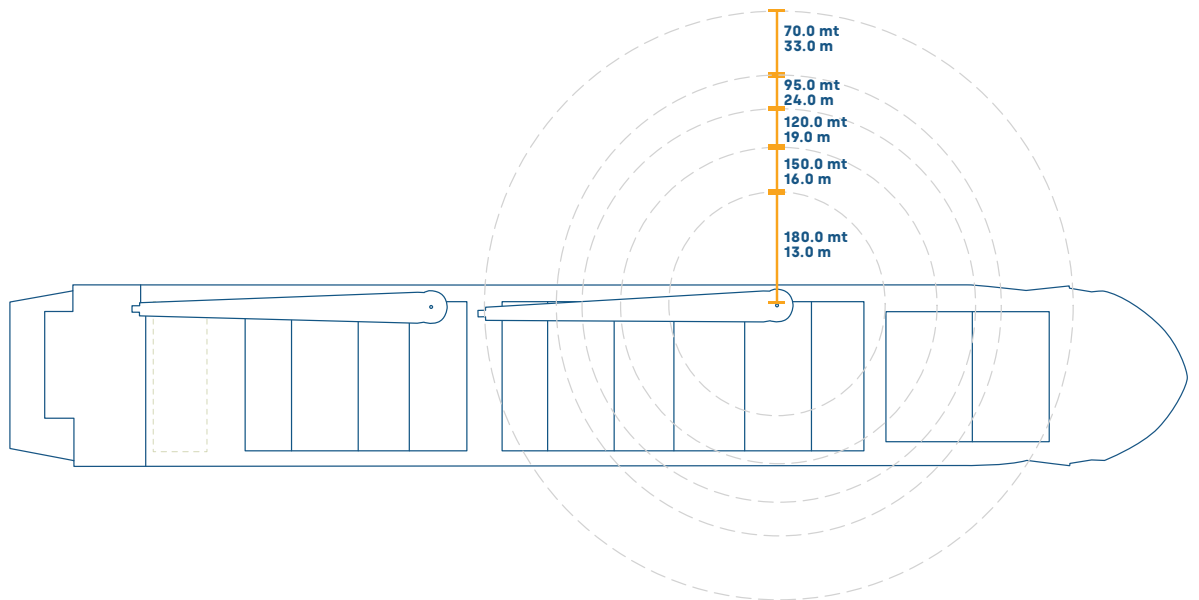
All details including speed are given in good faith and can vary on the individual vessels. They are to be considered „about“, are given without guarantee and must not be used as basis for charterparties or contracts without Intermarine's explicit written authority. For further information, please contact [info@intermarine.com](mailto:info@intermarine.com) // **Last Revised: December 2024**

**FRONT**

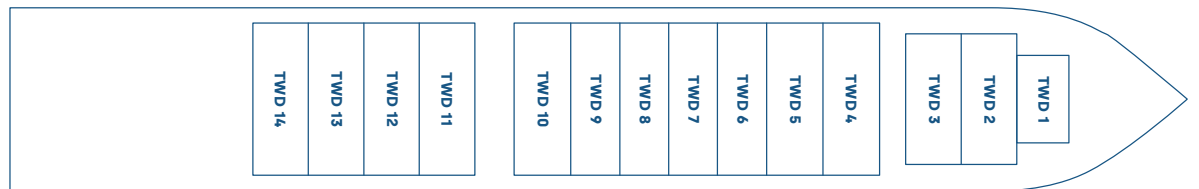
**SIDE**



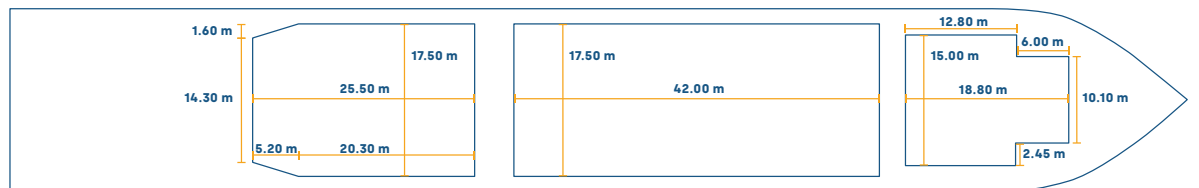
**MAINDECK**



**TWEENDECK**



**TANKTOP**



All details including speed are given in good faith and can vary on the individual vessels. They are to be considered „about“, are given without guarantee and must not be used as basis for charterparties or contracts without Intermarine’s explicit written authority. For further information, please contact [info@intermarine.com](mailto:info@intermarine.com) // **Last Revised: December 2024**